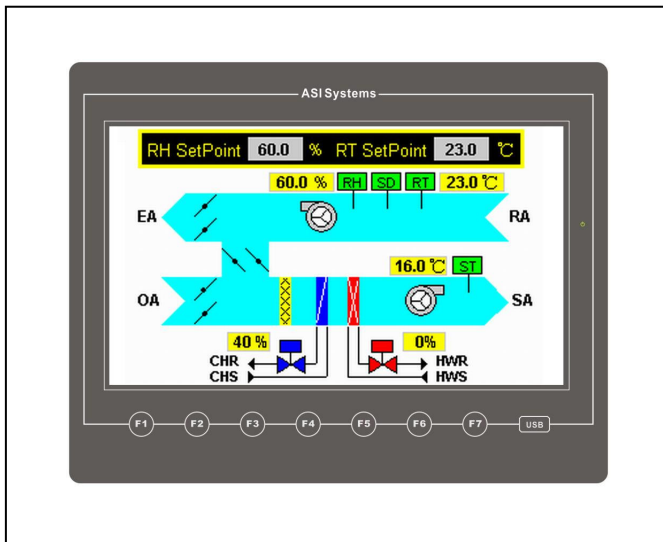


## DAK-1101 Series

## Touch-Screen Operator Panel Operator Interface



### GENERAL

The DAK-1101 series Touch-Screen Operator Panel is a Human Machine Interface for the ASI DDC or Modbus communicating controllers. The touch-screen operator panel allow for easy and self-explanatory operation by fingertip or touch-pen.

The DAK-1101 series supports up to 10 languages (any Windows supported language can be specified), Unicode system and supports BMP, JPG and GIF graphic formats. The data display in numerical, text and graphic. It allows the display controller status, the modification of setpoints and schedules, intervention in controller operation via overrides, and to annunciate and acknowledge alarms.

The DAK-1101 series provided RS232, RS422, RS485, Ethernet and USB communicating interface and ASI or Modbus communicating driver. Data from one or more controllers can be placed on a series of screens. The choice of data to be displayed is made at the time the DAK-1101 series is configured. The configuration is kept in non-volatile memory so that it does not lose program data during power interruption.

The DAK-1101 series is page based. The operator can select one of its pages. Scrolling up or down the page accesses data. The page structure allows rapid access to data. Numeric data can be scaled, or used to display one of a list of messages. Binary data can display different on and off label. Controller labels such as Description, Input, Output and Schedule Name can be displayed as strings.

### FEATURES

- Touch-Screen panel operation by fingertip or touch-pen
- Provided RS232, RS422, RS485, Ethernet and USB communicating interface
- Provided ASI or Modbus communicating driver
- Supports up to 10 languages and Unicode system
- Supports BMP, JPG and GIF graphic formats
- Data logging, alarms and historical alarm list
- 9 password levels protection
- Allows the display controller status, and to annunciate and acknowledge alarms
- To intervene in controller operation via overrides
- Allows modification of setpoints, schedules and monitors status

**SPECIFICATIONS**

Specifications	Models	DAK-1101A	DAK-1101C
<b>Display Type</b>		TFT LCD, 65535 colors	TFT LCD, 65535 colors
<b>Display Size</b>		10.1 inches	10.1 inches
<b>Display Resolution (pixels)</b>		1024 x 600	1024 x 600
<b>Operating System Memory</b>		32M Bytes	32M Bytes
<b>Programming data Memory</b>		8M Bytes (Max. 128M Bytes expansible)	8M Bytes (Max. 128M Bytes expansible)
<b>Battery Backed Memory</b>		128K Bytes	128K Bytes
<b>Serial Communication Ports</b>	COM1	RS232/RS422/RS485	RS232/RS422/RS485
	COM2	-	-
	COM3	RS232 or RS485	RS232 or RS485
<b>USB Communication Ports</b>		2 ports, USB Host x 1, USB Client x 1	2 ports, USB Host x 1, USB Client x 1
<b>Network Communication Ports</b>		-	Ethernet (10/100M)
<b>Protection Class for Front Panel</b>		IP65	IP65

**Power Supply:**

24 Vdc (±10%), 50/60 Hz, 20 W

**Central Processing Unit:**

RISC ARM9 32-bit CPU

**Screen Type:**

4-wire resistive, 4 degrees surface hardness and minimum 1 million times operational life

**Touch-Screen Operation:**

Operation by fingertip or touch-pen

**Support Graphic Formats:**

BMP, JPG and GIF

**Support Languages:**

Up to 10 languages  
(Any Windows support languages can be specified)

**Character Display:**

6 x 8 to 96 x 96 dot font (Windows built-in)

**Password Protection:**

9 password levels

**Vibration Testing:**

10 ~ 55 Hz  
(30 minutes testing at X, Y, Z direction 1G Hz shaking)

**Communications Speed:**

- COM1, COM2, COM3: Maximum 187.5K bps selectable
- Ethernet: 10/100M bps
- USB: Maximum 12M bps

**Clock:**

Real Time Clock

**Back Light:**

LED back light and over 20,000 hours lifetime

**Certifications:**

- CE: EN61000-4-2, EN61000-4-4
- EMI: FCC Part 15 Class A
- RoHS Compliance

**Dimensions:**

270.1 x 212.1 mm (W x H)

**Cutout Dimensions for Panel Mounting:**

259.5 x 201.5 mm (W x H)

**Operating Ratings:**

0 ~ 50 °C, 10 ~ 90 %RH (non-condensing)

**Storage Temperature:**

-20 ~ 60 °C