

ASI WebLink 3 Features

- Web-enabled User Interface supports multiple remote users
- Integrates Alarm Summary and History
- Integrated development environment using standard graphic, audio, video formats
- Simple interface for creating powerful, intuitive front ends
- OPC Client application, with OPC tag browser
- Reads ODBC data sources, exports CSV format data
- Includes HVAC graphics library
- Create reports, graphs using trend or alarm data
- Read/Write capability, with real time data updates
- Support for Internet security standards HTTPS/SSL, SHA-1

ASI WebLink 3 User Interface software enables web connectivity for any ASI Controls digital control system. WebLink 3 also integrates the Alarm and Event processing into a single software package.

ASI WebLink displays live control system data and/or historical trend data in a web browser. The browser can be accessed over the Internet, through a LAN or WAN, or on the local PC. Depending on their access level, users can initiate overrides, change schedules, and otherwise control system behavior. WebLink enables real time remote monitoring and control from anywhere on a network.

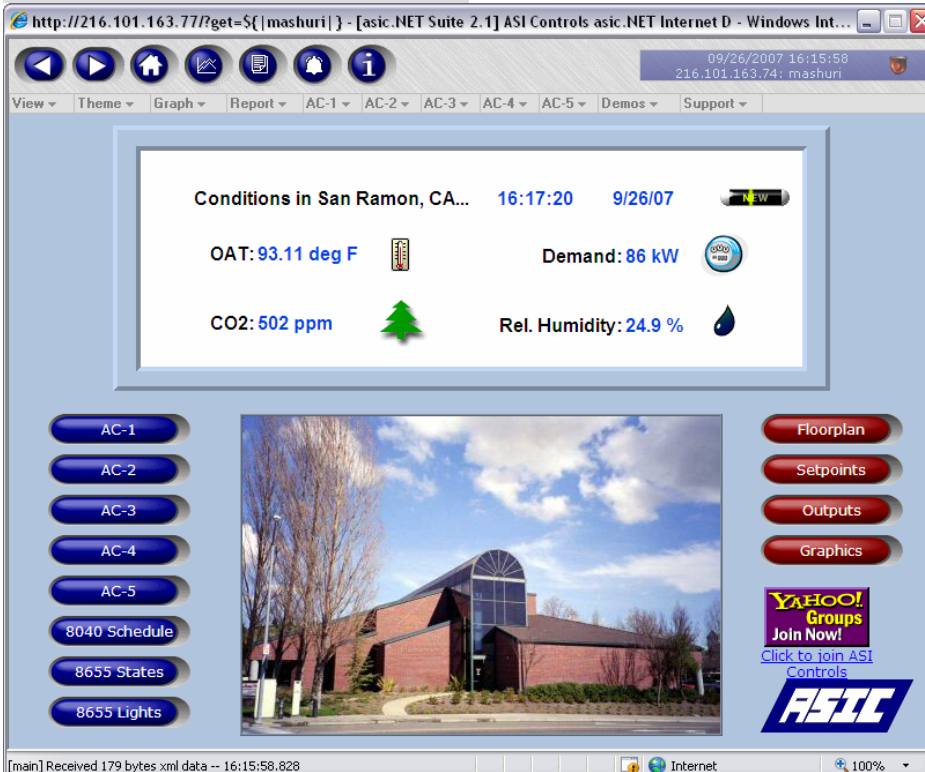
The WebLink Editor makes building custom screens simple through drag and drop editing, OPC tag browsing, graphics manipulation capabilities, support for scripting and many other features. A built-in Web Server handles data updates using XML. WebLink connects to ASI Controls networks through the ASI LinkOPC Server and supports reads and writes on any network point.

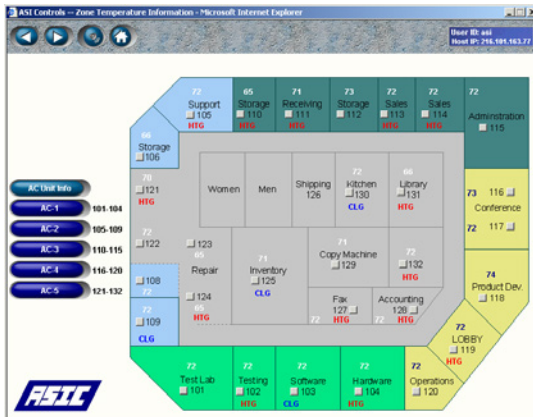
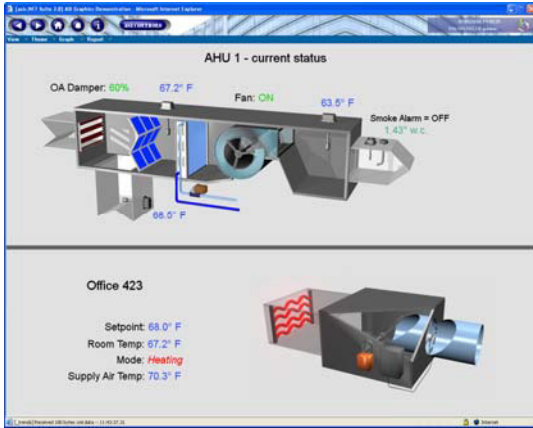
WebLink supports common web graphic, audio and video formats, and includes a library of 3D animated HVAC graphics. Any element on a screen can be automated using JavaScript, giving developers flexibility and power to create functional, feature-rich screens for users. Tool bars, menus, colors and other skin elements can be customized. Graphics can be added, layered, and scripted. Video and audio clips can be embedded on screen. All configuration, user, trends, and alarm data are stored in an open-source Firebird ODBC compliant database.

ASI WebLink connects to all ASI products through the ASI LinkOPC Server. Active read/write data can be dragged onto the view by browsing the ASI OPC Server. Dynamic data is updated onscreen in real time, and WebLink supports writing data back to controllers. The ASI LinkOPC Server enables remote ethernet connections using an ASI EtherLink/2, an ASIC/2-7540 with USB Ethernet adapter, or an ASIC/2-8540 with ETH-8540 Ethernet Adapter..

Data trends can be created for any point on the system. Trended values can be displayed on any WebLink screen. WebLink saves trend data to disk, and provides an interface to report and/or graph the trend data at user-selected time intervals. Custom graphs can be displayed in your web browser, and templates can be saved for later re-use. Reports data can be exported in CSV format.

ASI WebLink is designed for multiple remote access over LAN, WAN, or Internet. ASI WebLink makes it very easy to develop and deploy feature-rich, compelling and intuitive control system front ends. It requires Internet Explorer 4.0 or later. Setting up the web server requires only a few parameters - IP address, port number and idle timeout.





Made in USA

Security

With logins secured by 160-bit SHA-1 encoding, plus optional support for HTTPS/SSL protocol, ASI WebLink enables secure, convenient access to your systems

License

WebLink is licensed software with several options. WebLink Local works only on a single computer. A 30-day trial version is available that supports one user connected locally on the PC running the WebLink web server for evaluation. You can upgrade a WebLink license at any time to include a larger number of simultaneous remote connections. WebLink also includes a LinkOPC (ASI OPC Server) license.

WebLink Net adds network support for 1 simultaneous network user. Additional connections can be purchased (max 4). WebLink Net Plus adds optional Integrated Alarms (Summary and History) features with automated delivery of notifications to an individual or group of individuals via email.

WebLink Enterprise adds Netcasting of setpoint and schedule changes to multiple sites and allows up to 10 simultaneous network users.

System Requirements

ASI WebLink screens are viewable on a wide variety of platforms supporting the Internet Explorer browser.

ASI WebLink Console, Net, and NetPlus servers require:

- Intel based Computer (1 GHz or faster CPU, 1GB+ RAM)
- Windows Server 2003 or 2008; Windows Vista Home Premium, Business or Ultimate; Windows XP Professional
- 500 MB free hard disk space (Dependent on Data Logging Volume)

ASI WebLink Enterprise server requires:

- Intel based computer (2.0 GHz or faster; 2 GB+ RAM)
- Windows 2003 or 2008 Server Operating System
- 2 GB+ free hard disk space (Dependent on Data Logging & Number of Site Locations)

How to Order:	Order Number
HMI/OPC at Console Only	WebLinkLocal
HMI/OPC + 1 Network User	WebLinkNet
WebLinkNet + Alarm/Notify	WebLinkNetPlus
WebLink Net Plus + Netcasting	WebLinkEnterprise

WebLink Options

Alarm & Events License	WebLinkAlarms
Add Visual Expert License	ExpertLicense
Add 1 Network User Connection	WebLinkNetConnect 1
Add 3 Network User Connection	WebLinkNetConnect 3
Add SSL/HTTPS Support	WebLinkSSLSupport
Add Remote Sites (Enterprise)	WebLinkRemoteUser
Convert Weblink v2 to v3	WebLinkUpgrade

All software is supplied on CD-ROM or Web Download