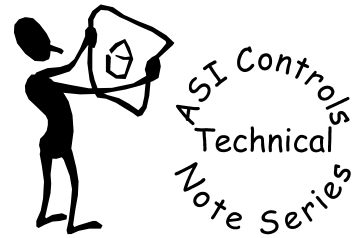




Flash Device

ASIC/1-6000, ASIC/1-8655, ASIC/2-7540, ASIC/2-8540

Date: 23 February 2006



Note No. TE-026

ASI In-Field Flash Programmer software allows our users to upgrade the firmware in the ASIC/1-8655, ASIC/1-6000, ASIC/2-7540 and ASIC/2-8540 controllers over the RS-485 communication bus or over Etherlink/2 Ethernet communications. FlashDev supports multiple products. The flash download files are kept in separate subfolders for each product. Make sure you have selected the correct product and download file.

Install FlashDev

Install the ASI In-Field Flash Programmer FlashDev.exe. Unzip the file, FlashDev-2006.zip into c:\ (root). It will automatically create the folder C:\ASI\FlashDev\ and sub folders and unzip the necessary files..

As new firmware is released you only need to update the Flash File.

Product	Folder	Flash File
ASIC/2-7540	C:\ASI\FlashDev\7540	754aXX-rel.hex
ASIC/2-8540	C:\ASI\FlashDev\8540	854aXX-rel.hex
ASIC/1-6000	C:\ASI\FlashDev\6000	600aXX-rel.hex
ASIC/1-8655	C:\ASI\FlashDev\8655	655aXX-rel.hex

where XX represents the version number, for example, 17, 10, etc.

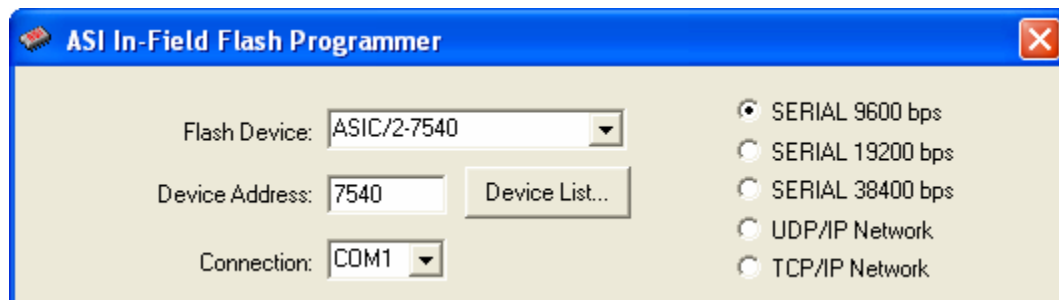
Note: FlashDev works under **Win-XP**, **Win-2000**, but does not support Win-NT, Win98, Win95.

Copy Hex File

Copy the latest firmware zip file, into the product folder and Unzip the firmware Hex file into the product subfolder. For example the ASIC/1-8655 file name is 655axx-rel.hex, and goes in C:\ASI\FlashDev\8655. The latest release is available from our website integrator center product page, <http://www.asicontrols.com/integrator/> . Contact: ASI Controls Technical Support support@asicontrols.com, or call 925-866-8808 x105 if you have questions,

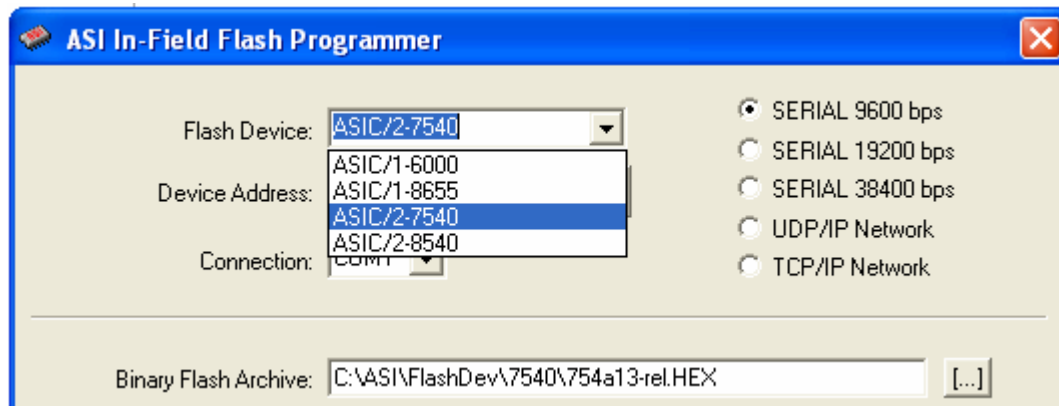
Flash Download

Start FlashDev.exe. FlashDev.exe expects to run from and find its files in c:\ASI\FlashDev\ .It remembers the last settings used.



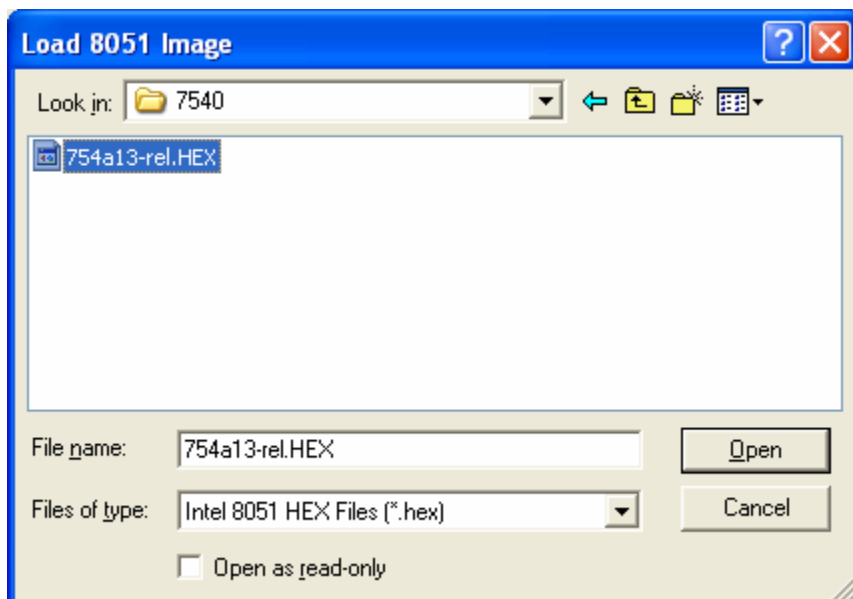
Select Product

Select the Product to be downloaded.



Select Hex file

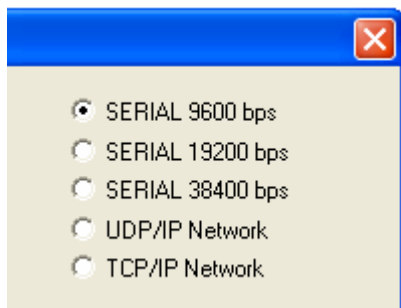
Select the firmware Hex file to be downloaded.



Note: FlashDev will NOT work with WT-0xx Wall Sensors!!

Select Connection and Device Address

You must communicate with the controller. Use Expert to establish the COM port, Device Address and Baud Rate for serial communication, or the proper Ethernet connection through an EtherLink.



For Serial connections select the correct COM Port, COM1, ..., COM8

Connection: COM3

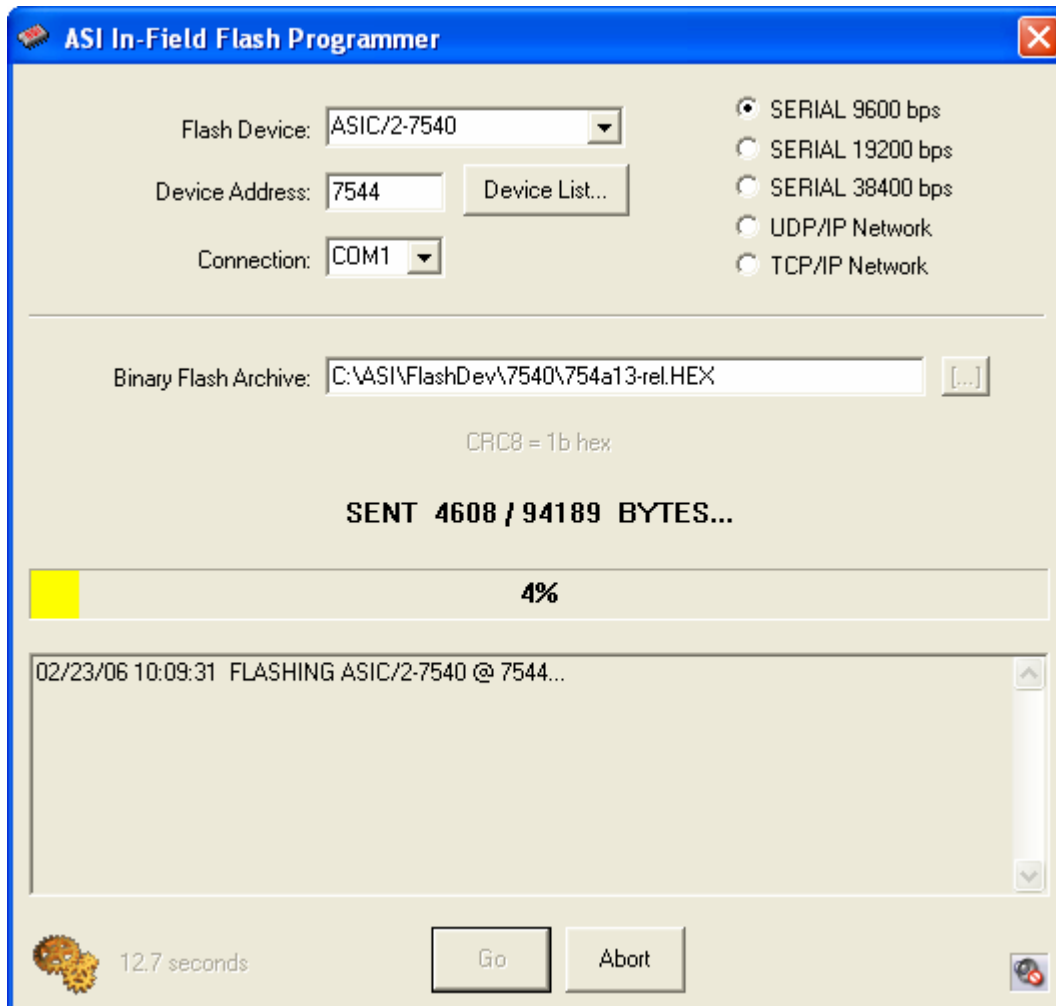
For UDP/IP or TCP/IP Ethernet connections via Etherlink/2 set the correct IP address and Port separated by a colon.

Connection: 192.168.1.100:3001

Go

Press Go to start the download. FlashDev then downloads the file to the controller.

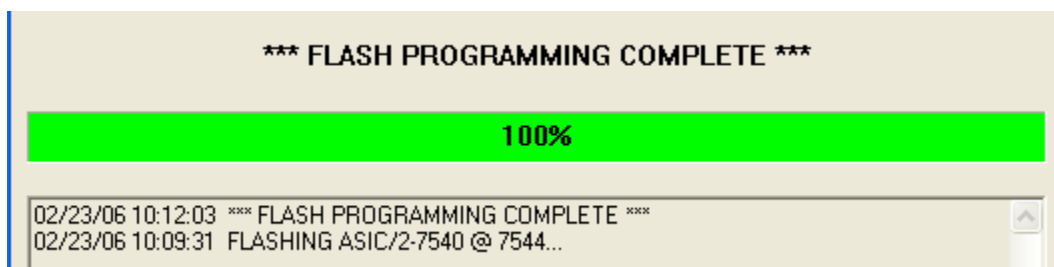
Expert must be at Home or Closed to release the Com Port.



The status bar shows the progress in yellow and turns green when Flash Programming is Complete.

An ongoing log of each session is kept in the text window and to C:\ASI\FlashDev\FlashDev.log.

This file is cleared each time Flash Dev is started.



When successful, the controller goes to run mode, and resumes normal operation.
The controller is now programmed with the new firmware.
Close FlashDev by clicking the x in the upper right corner and reopen Expert.
Load or reload the ASIC/2 controller configuration if required because of changes in firmware.

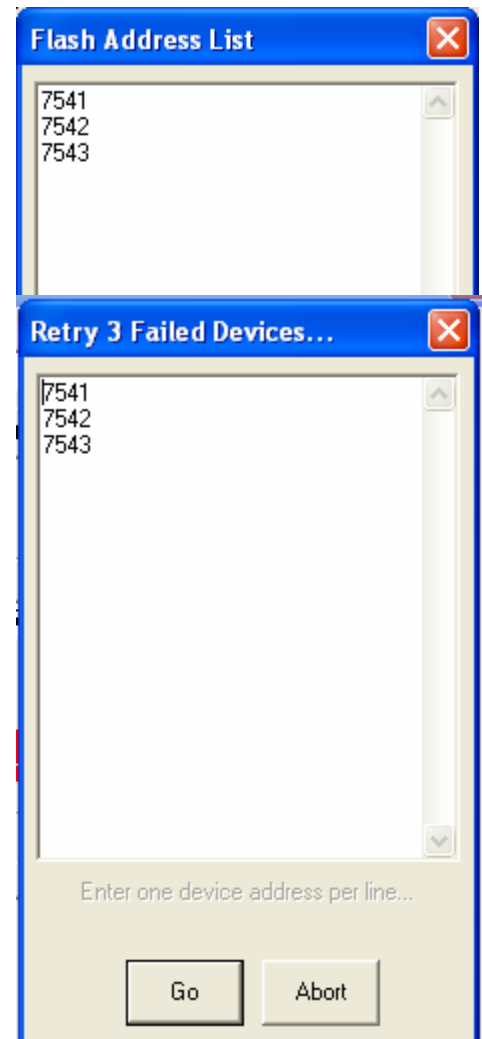
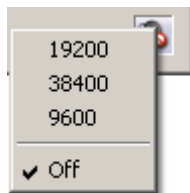
Device List

A list of device addresses can be entered for "batch processing". Select Device List to specify a list of controllers. Each entry is separated by <Enter>. You may copy and paste the list from a text document.

If one or more addresses in the list fail to complete, they are added to a retry list which pops up automatically after the original list has been processed.

Sounds

Sound files are kept in subfolders ..\Sounds\9600, etc. You may choose to play sounds by clicking on the icon in the lower right corner.



If you have further questions please contact: ASI Controls Technical Support support@asicontrols.com, or call 925-866-8808 x105